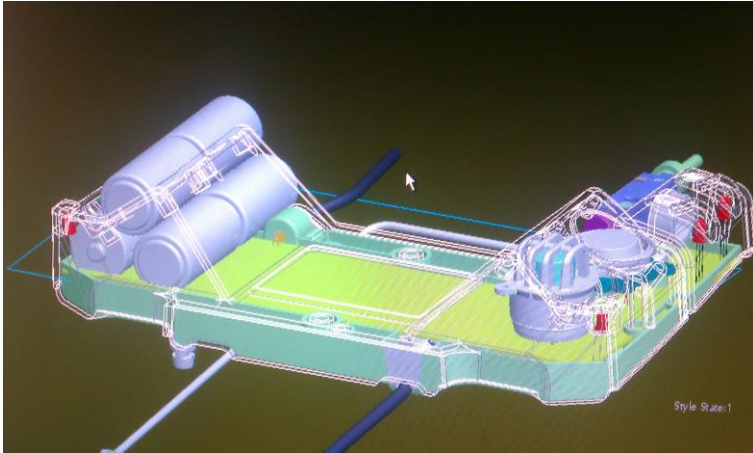


010101010101010101

010101010101010101

010101010101010

Engineering



Prototyping



Tooling/Machining



Puttaraj Belaldavar
engineer



Sam Shifron
engineer



Vince So
engineer



Joe Baker
engineer



Jaime Berndt
engineer

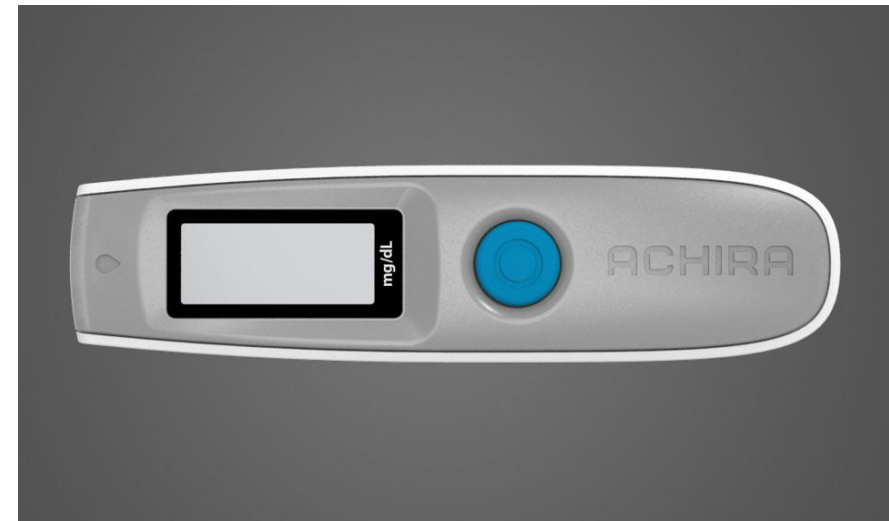
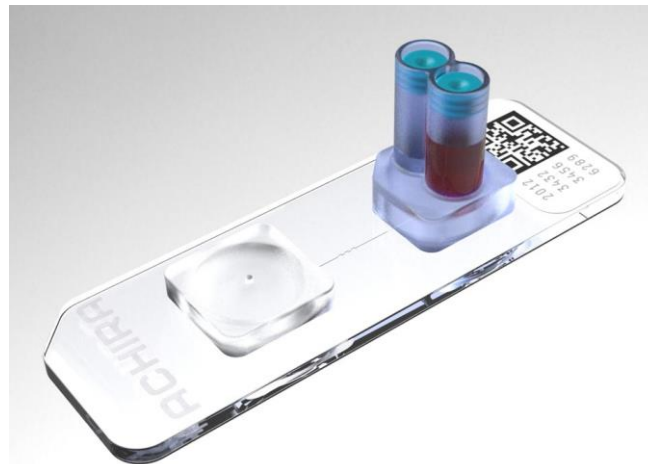


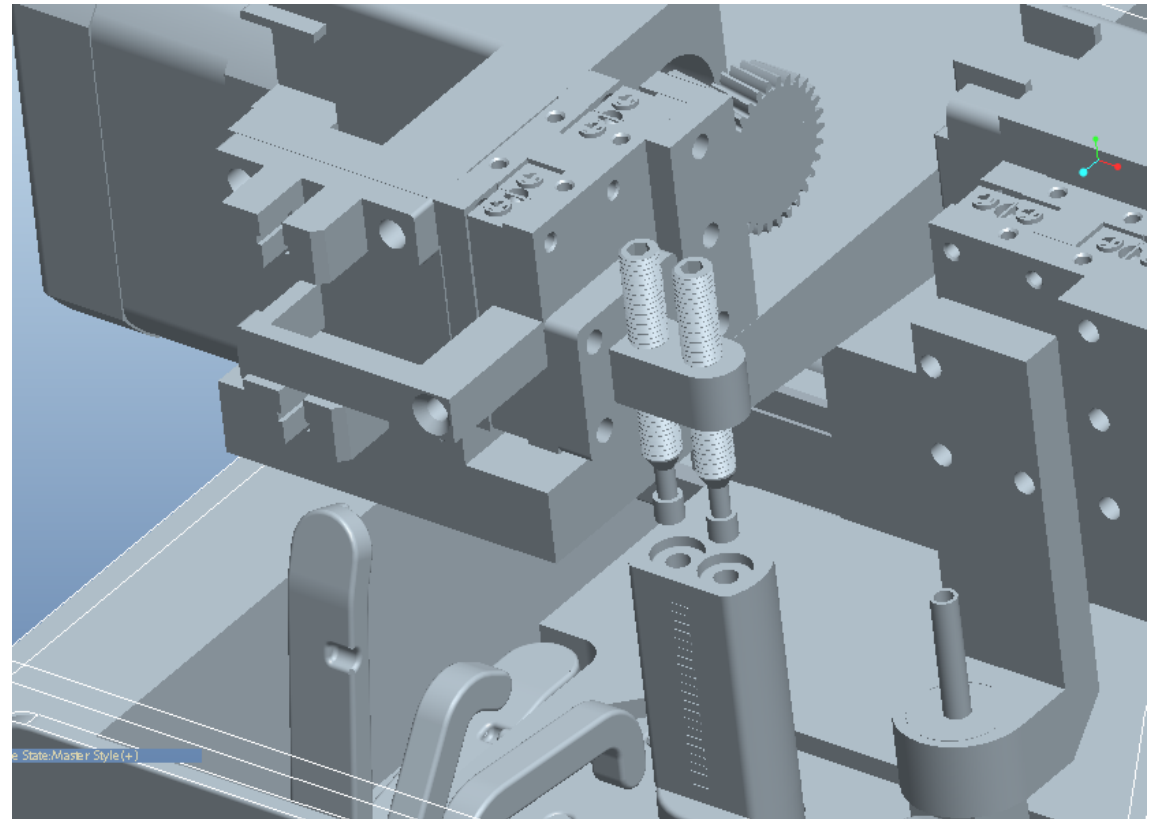
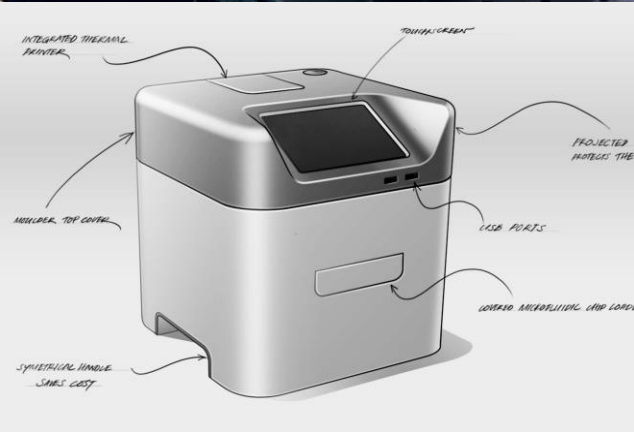
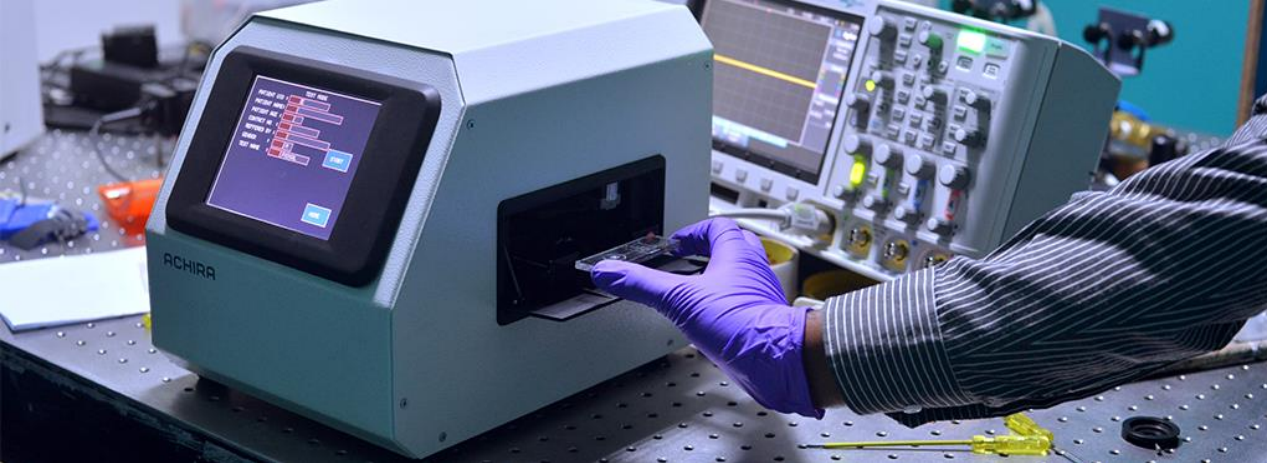
Achira Microfluidics

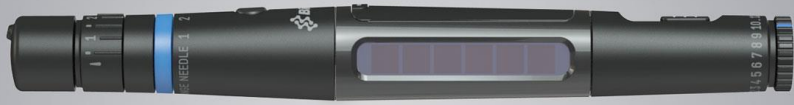
Achira Labs is a young and innovative biotechnology company funded by the Bill & Melinda Gates Foundation.

The consumables used in these devices are patented technologies from Achira. These consumables are to be at a fraction of the cost when compared to similar solutions available in the market, allowing the diagnostics to reach the masses.

Scope: Product Strategy, Industrial Design, Product Engineering, Packaging Design, Prototyping and Production Support







GlucoPen

GlucoPen is a glucometer used to monitor sugar levels for patients who are on insulin. The current glucometers are bulky and need to be carried by the patient in a separate kit including the lancing device and the strips.

We worked with a hardware partner to come up with modules which are extremely compact to fit in a pen-like configuration. We integrated the lancing mechanism and the strip cartridge into one single unit. The OLED display with a rechargeable battery made a very clear user interface with extended memory.

The device could be synced with a smartphone to record and monitor glucose levels.

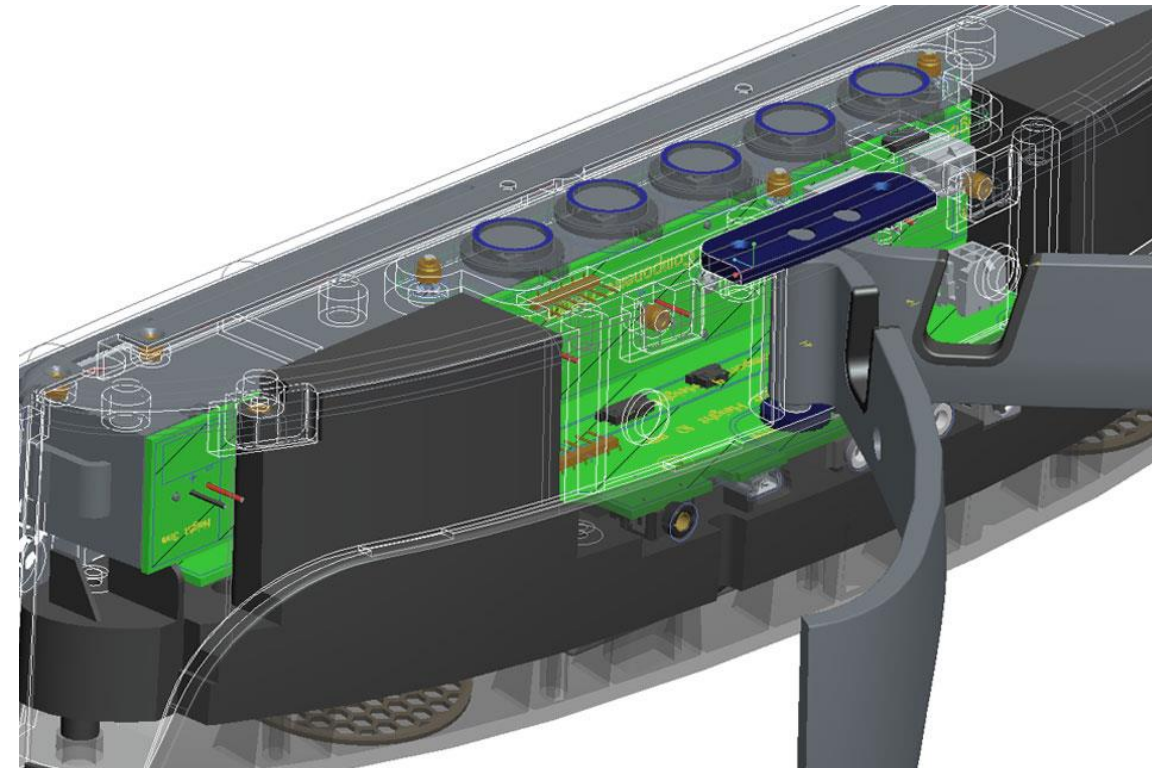
Scope: Industrial Design, Product Engineering, Manufacturing support



Conferencing and Entertainment Speaker

MyBeam is an innovative audio device which transforms listening experiences at work and play.

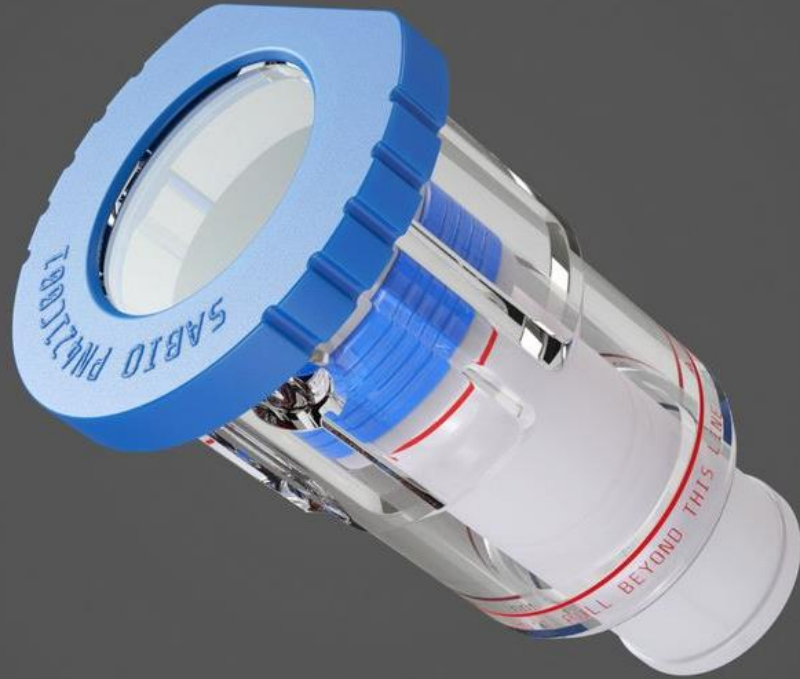
Scope: Industrial Design, Electro Mechanical Integration, Product Design and Engineering, Prototype Support and Production Support



Sample Filtration Consumable

Blood and Urine sample filtration device used to improve the time taken in the culture based diagnostics. Applied for Patent Cooperation Treaty (PCT)

Scope: Industrial Design, Product Engineering, Manufacturing support





Tablet testing equipment

This device is used for testing the tablets for its binding. This was designed for Indian pharmaceutical industries.

Scope: Industrial Design, Product Engineering, Manufacturing support

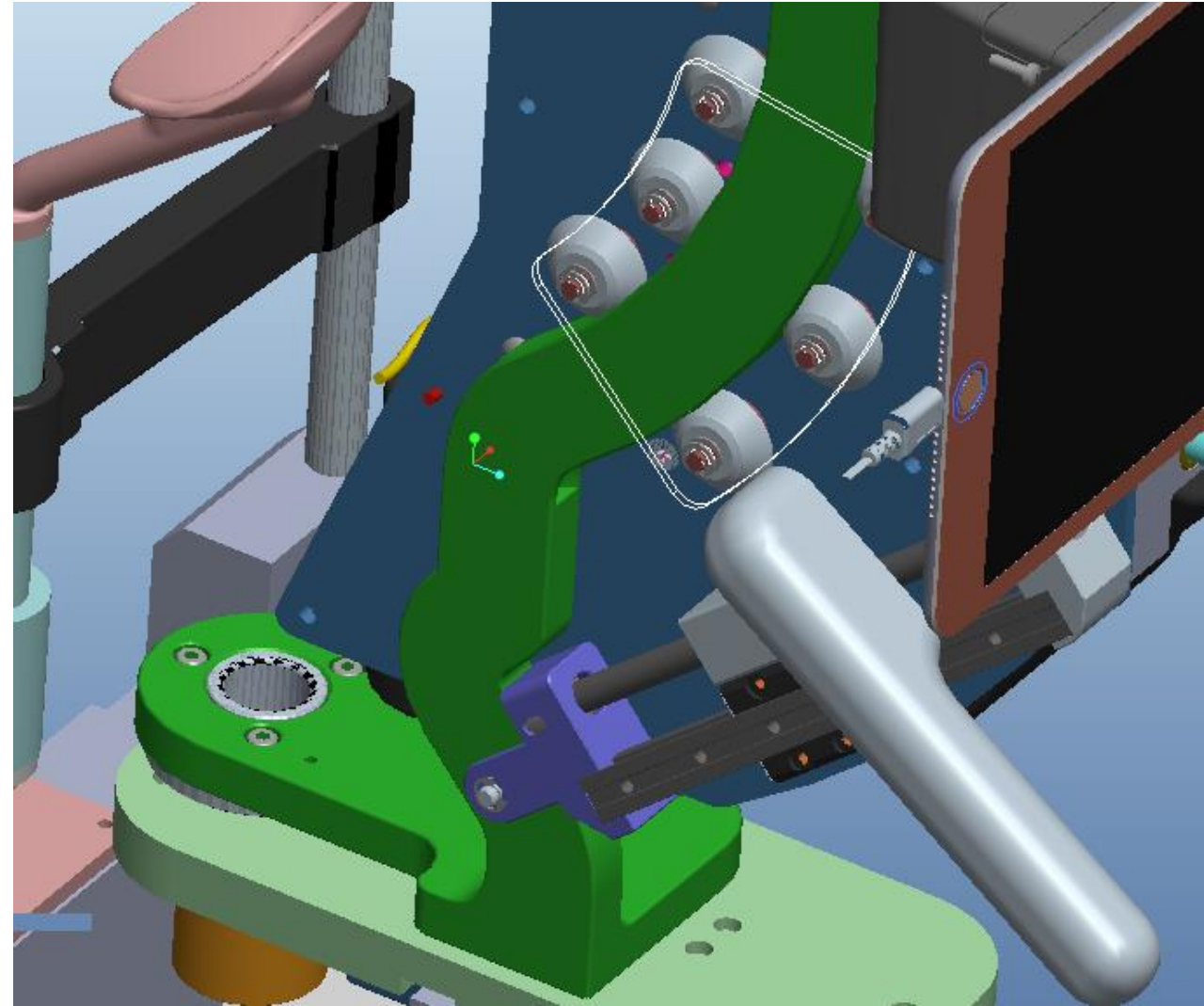
1. Set the values to zero
2. Open the lid and load the tablet
3. Close the lid and press start
4. Note the reading at the contact diameter
5. Proceed further and note the reading when the tablet is crushed (Strength) readings
6. Take the printout of the readings
7. Take out the clear tray to collect the powder



Interface for Medical Robot

Medical robot is used to position the needle on the tumor and burnt . We designed the interface options for existing robot.

Scope: Industrial Design, Product Engineering, Manufacturing support



Medical Cart Module

We have designed modules which go on medical cart for cosmetic treatments.

Scope: Industrial Design, Product Engineering



Pregnancy Test Kit

Medical test kits are very commonly used as the first test at home. We designed the first woven fabric based pregnancy test kits for developing markets.

Scope: Industrial Design, Engineering and Manufacturing support





Breast Cancer Treatment Cart

This cart would hold clients treatment units along with other peripherals. The cart is make very soft and feminine.

Scope: Industrial Design, Engineering integration



Ear Thermometer

The thermometer was designed for point of care with integrated heart rate monitor in public care camps.

Scope: Industrial Design, Product Integration



Heart Rate Monitor

Wrist worn heart rate monitor designed to be worn for long duration with soft touch and soft rubber parts.

Scope: Industrial Design, Product integration, Product Engineering, Prototype Support

